

# You can do IT!

**Presenter: Samantha Link**

# Topics Today



Troubleshooting



Teaching  
Tech



Cool Tools



# Troubleshooting

# You can do IT



Library staff can show how to search  
and where to start looking.

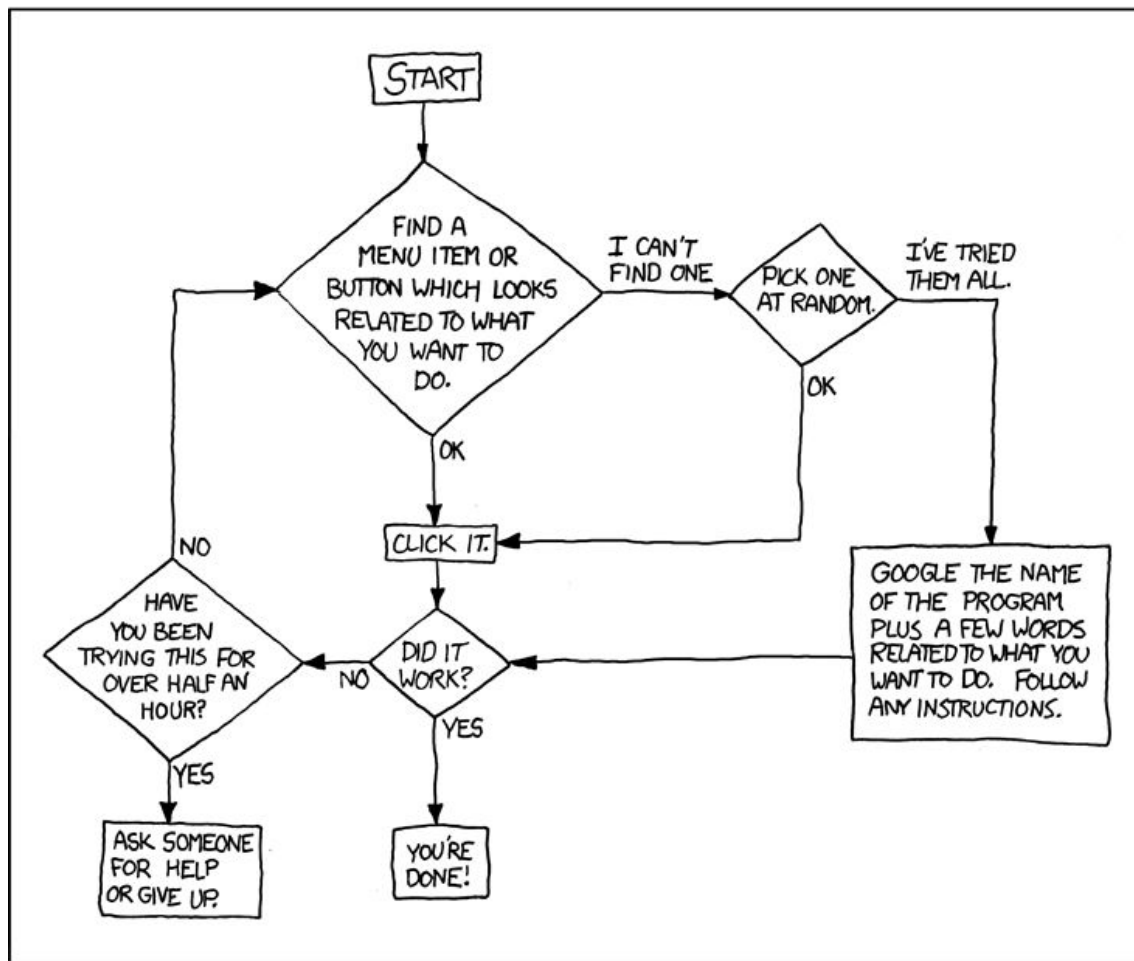
# Tech Support Cheat Sheet

by  
Randall  
Munroe



<https://xkcd.com>

WE DON'T MAGICALLY KNOW HOW TO DO EVERYTHING IN EVERY PROGRAM. WHEN WE HELP YOU, WE'RE USUALLY JUST DOING THIS:

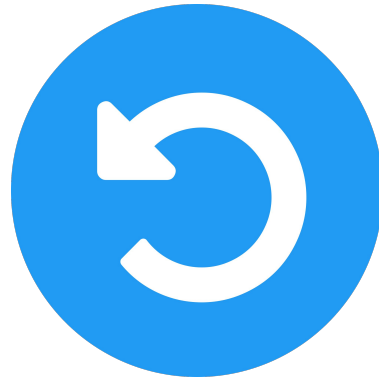


# You can do IT



Remember magic trick:

## Restart



# Screenshot it!



Snip & Sketch



IMAGE CREDIT: University of Illinois Library

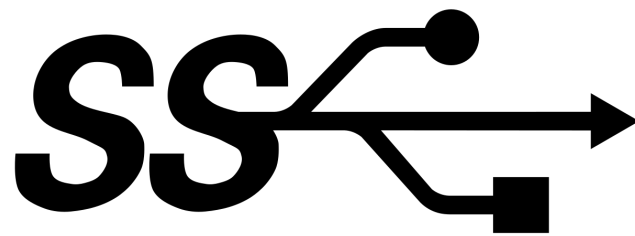
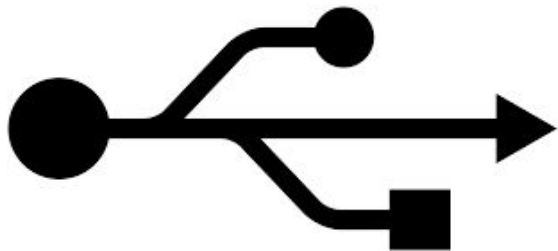


# Cords, dongles, ports...oh my!





USB



# VGA

(analog)

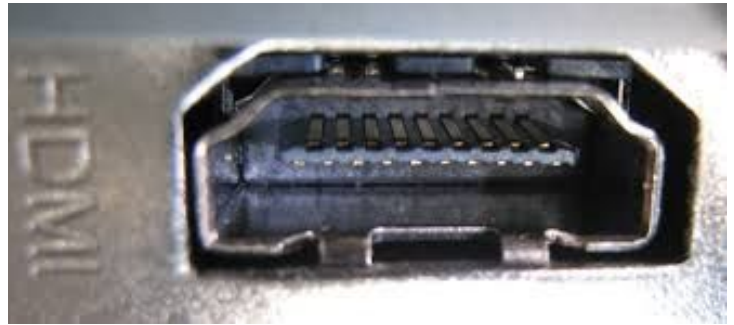
video only



# HDMI

(digital)

audio + video



# VGA

(analog)

video only



*RIP*  
**1987 - 2015**



Yes, there are adapters!

# HDMI

(digital)

audio + video



# Device chargers



MADISON PUBLIC LIBRARY - Central



<https://www.pinterest.com/pin/1970393563008682>



# How does WiFi work?



The Internet works by chopping data into chunks called packets. Each packet then moves through the network in a series of # hops.

→ CenturyLink, Mediacom, Spectrum, etc.



**Sender**

1

Wireless  
router

**Modem**

2

3

4

inside library,  
office, café,  
etc.

## Entering the network

Each packet hops to a local Internet service provider (ISP), a company that offers access to the network – usually for a fee.



**“THE INTERNET”**

Illustration: © 2006, iStockphoto

# Back it up



paper



hard drive



cloud service

# Your ITeammates



Kris  
Schwartz

Dalton  
Stewart

**IFLS**

Tony  
Kriskovich

**NWLS**

Sony  
Yang

Tou  
Yang

**WRLS**

Ashraf Ben  
Khalifa

Joshua  
Klingbeil

**WVLS**





IMAGE CREDIT: Hannah Speer, Entuity Network Analytics



# Teaching Tech

# Digital Learn



<https://www.digitallearn.org>

Walkthroughs for basic computer use  
& online basics (sponsored by PLA)

# Use a computer to do almost anything!

**Choose a course below to start learning or search courses.**

If you are new to computers, haven't used them for a while, are a little unsure and uncomfortable, or just need a bit of a refresher, we have the tools to help you tackle technology at your own pace and gain the confidence you need to succeed.

## Starting Out

### Why Use a Computer?

Reasons why you should take the time to learn about computers.

🕒 15 mins

### Getting Started on a Computer

What a computer is and how to use a mouse and keyboard.

🕒 15 mins

### Using a PC (Windows 10)

Learn the basics of using a PC with the Windows 10 Operating System.

🕒 13 mins

### Navigating a Website

### Intro to Email

### Intro to Email 2: Beyond the Basics

# Libby

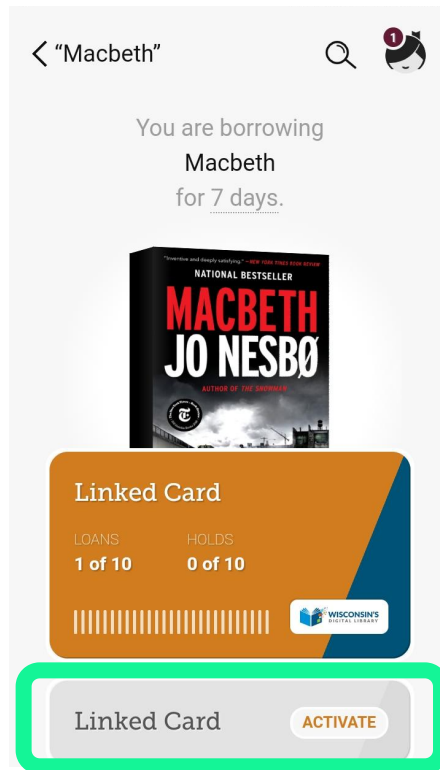
## OverDrive app



# Libby

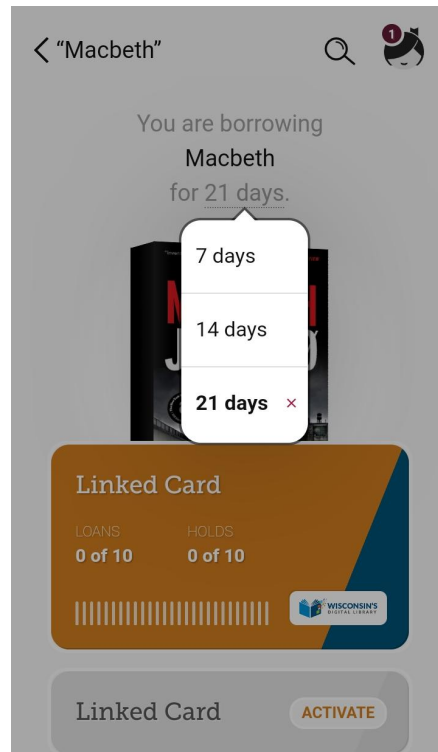
Connect multiple  
library cards on  
same device

- ★ personal?
- ★ family?
- ★ staff card?



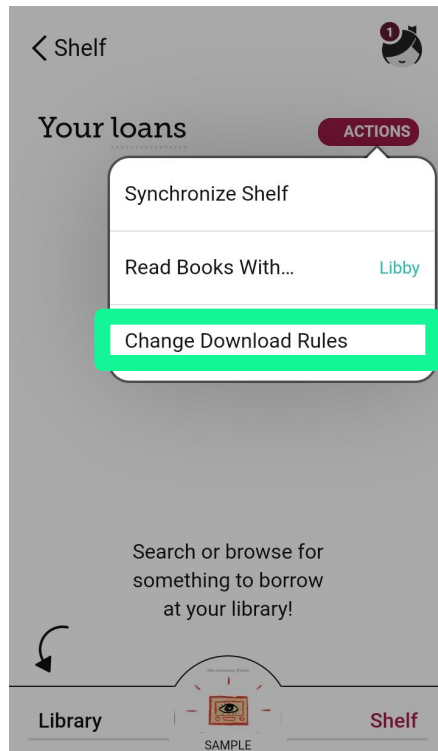
# Libby

**Borrow screen tip:**  
Set longest loan  
period possible



# Libby

Listeners and  
readers on  
the go:  
download  
instead of  
streaming



HIDE



Which of your loans should be downloaded automatically?

## Everything

All borrowed titles will be added to the download queue automatically.

## Titles under 20 megabytes

Most books are under 20mb, but audiobooks can be in excess of 300mb, and graphic novels and magazines are often over 100mb.

## Nothing

Each title will stream, and will be unavailable offline, unless you choose to download it manually.

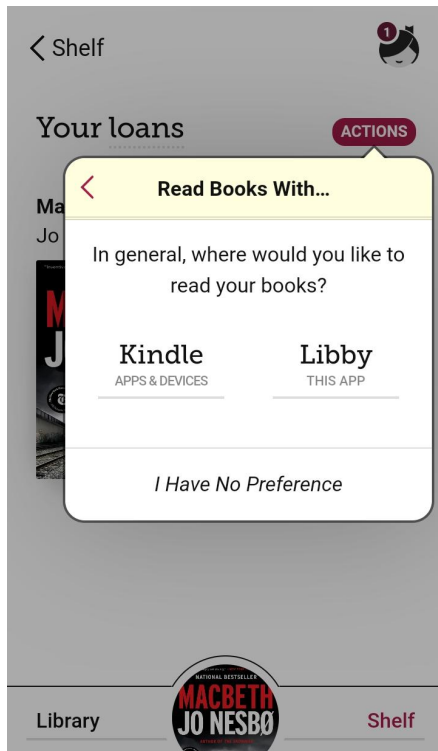
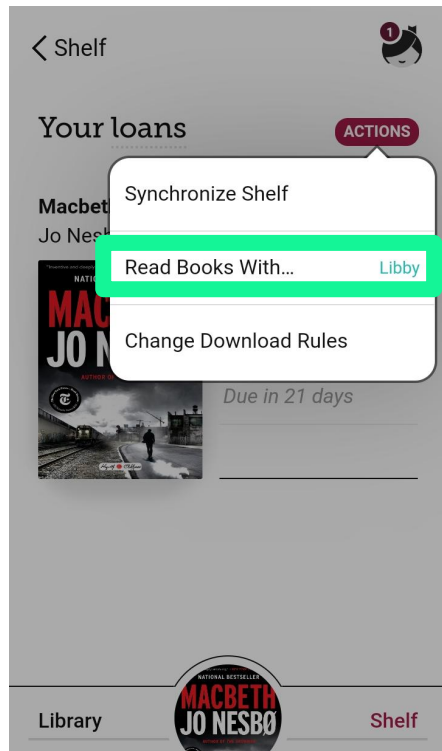
## Download only on Wi-Fi

Reduces mobile data usage.





# Libby



“Read Books With...” feature can send to Kindle (Fire compatibility “coming soon”)



Cool Tools

# Program resources



IFLS + WVLS:

WVLS: <https://wvls.org/equipment-for-booking>  
WRLS: <https://www.wrlsweb.org/for-librarians>

## Borrow things like...

- ★ Laptops, tablets
- ★ Maker / STEAM kits
- ★ Sound system

# Digitization equipment



**NWLS:** 1 flatbed scanner + laptop (DPI WISElearn)

**WVLS:** 1 flatbed scanner + laptop (DPI WISElearn)

For use with: documents, small batch of slides, film negatives

**WRLS:** <https://www.wrlsweb.org/for-librarians>

- Slides or film negatives to digital image files
- VHS tapes to DVD, cassette tapes to mp3s

# Digitization equipment



1 large-batch slide scanner available for request statewide (DPI WISElearn): contact Tamara Ramski of South Central Library System

For help planning a local history digitization project, contact Emily Pfotenhauer at WiLS